



FOR LEASE

740 Michigan Street NE - Grand Rapids, MI

New restaurant & retail suites in Midtown just blocks from the Michigan Street "Medical Mile".



Looking to the SW at the NE elevation.

MORE THAN AN ADDRESS

616 Lofts on Michigan

Located in the city's Midtown district, just blocks away from the Medical Mile, 616 Lofts on Michigan is an enticing location for restaurants and retailers. This project will be the first mixed use development on Michigan Street to include retail, office and residential. Ample adjacent parking for commercial tenants and shoppers as well as underground parking for residents.

Property Information

Demographics for a 5 mile radius:
Median HH Income: \$33,772
Population: 277,163
Median Age: 32.4
Traffic Counts: 31,022 per day

Rental Rate (PSF): Modified Gross
Tenant pays pro-rated suite electric, gas/heat, water, janitorial, phone and IT.

Suite 1:	3,310 SF	- \$27.50
Suite 2:	2,544 SF	- \$28.00
Suite 3:	2,611 SF	- \$28.00
Suite 4:	2,655 SF	- \$27.50
Suite 1 & 2:	5,584 SF	- \$27.00
Suite 3 & 4:	5,276 SF	- \$27.00
Suite 1 & 4:	11,130 SF	- \$26.50

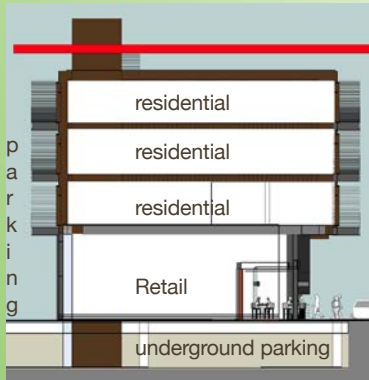
Parking: On-site & street parking.
Available: Fall 2015

*Information deemed reliable but not guaranteed.

m[®] retail

www.mretail.com

Chris Muller
Chad Clemens
(616) 881-2888



E elevation.



SE elevation.



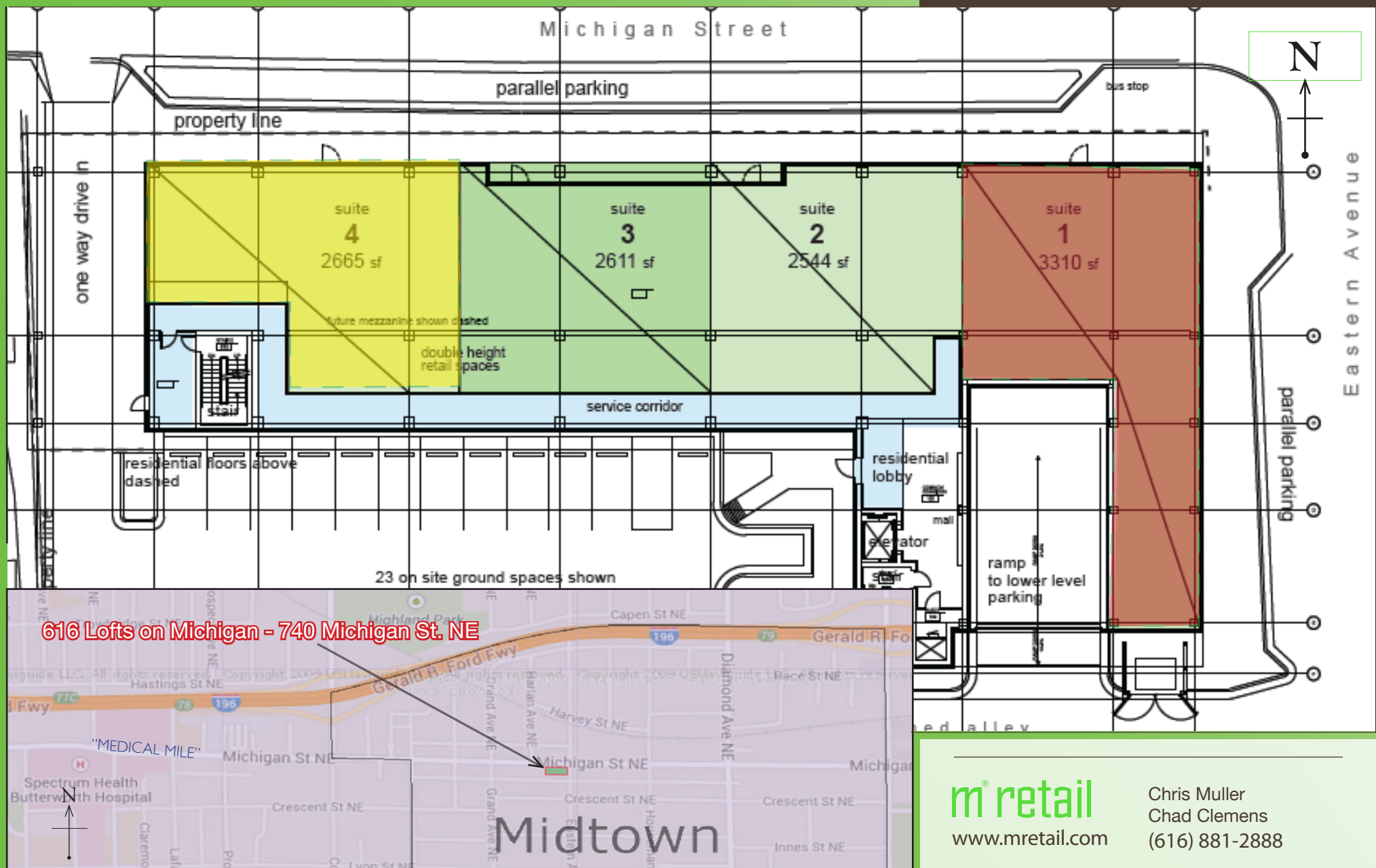
N elevation.



FOR LEASE

740 Michigan Street NE - Grand Rapids, MI

New restaurant & retail suites in Midtown just blocks from the Michigan Street "Medical Mile".



m[®] retail

www.mretail.com

Chris Muller
Chad Clemens
(616) 881-2888